

Cash Position

DESIGNATED FUNDS	Blessing	272,080.66
	Building Fund	326,579.58
	Missions	27,518.49
TOTAL DESIGNATED FUNDS		626,178.73
OPERATIONAL FUNDS	Cash on Hand	8,624.36
	Money Market	745,308.44
	Operational Checking	981,019.54
	Investment	205.45
	Certificates of Deposit	55,634.00
TOTAL OPERATIONAL FUNDS		1,790,791.79

FOR YEAR ENDING
DECEMBER 31, 2018

Balance Sheet

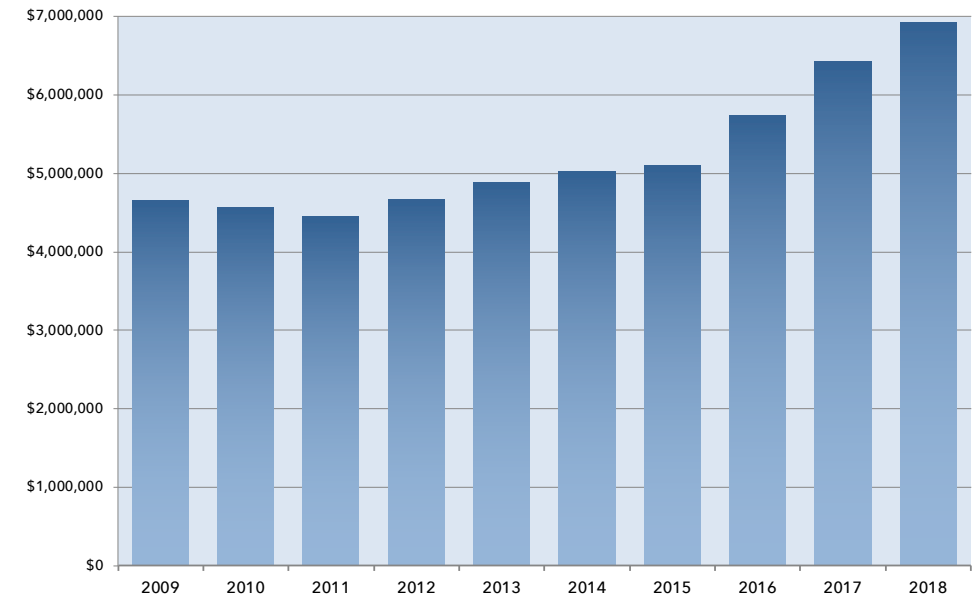
	2016	2017	2018
ASSETS			
Operational Funds	1,328,910.91	1,469,175.01	1,790,746.79
Designated Funds	299,698.40	614,499.25	626,178.73
Accounts Receivable	2,495.00	(50.00)	-
Other Current Assets	76,774.86	67,229.51	62,247.07
Land, Building & Improvements	11,606,133.47	11,245,575.78	11,291,810.67
Computer, Equipment & Furniture	1,829,362.95	1,912,847.11	2,033,320.39
Vehicles	62,095.37	99,892.17	127,419.92
Accumulated Depreciation	-4,625,464.20	-4,974,937.56	-5,311,958.92
TOTAL ASSETS	10,580,006.76	10,434,231.27	10,619,764.65
LIABILITIES			
Current Liabilities	256,641.68	233,906.04	258,576.17
Long Term Liabilities	2,437,673.50	1,933,990.73	1,654,586.93
Total Liabilities	2,694,315.18	2,167,896.77	1,913,163.10
EQUITY			
Retained Earnings	6,882,924.26	6,835,252.88	7,183,015.47
North Bay Equity	1,050,438.70	1,050,438.70	1,050,438.70
Net Income	(47,671.38)	380,642.92	473,147.38
Total Equity	7,885,691.58	8,266,334.50	8,706,601.55
TOTAL LIABILITIES & EQUITY	10,580,006.76	10,434,231.27	10,619,764.65

Income Statement

	2016	2017	2018*
Unrestricted Income			
Tithes & Offering	5,046,695.17	5,404,526.57	5,684,331.51
Central Services Income	403,830.90	593,429.24	710,333.54
Ministry & Miscellaneous Income	27,249.76	35,630.23	39,993.27
Restricted Income	255,206.82	396,690.50	491,097.42
TOTAL INCOME	5,732,982.65	6,430,276.54	6,925,755.74
Expense			
Ministry/Program Expense	434,620.05	450,617.05	442,376.71
Facility Expense	717,396.51	720,393.49	733,871.43
Operational Expense	629,357.46	853,010.10	977,025.18
Personnel Expense	3,586,680.71	3,529,397.98	3,659,939.44
Restricted Expenses	367,719.15	496,323.30	639,395.60
TOTAL EXPENSES	5,735,773.88	6,049,741.92	6,452,608.36
NET INCOME	(2,791.23)	380,534.62	473,147.38

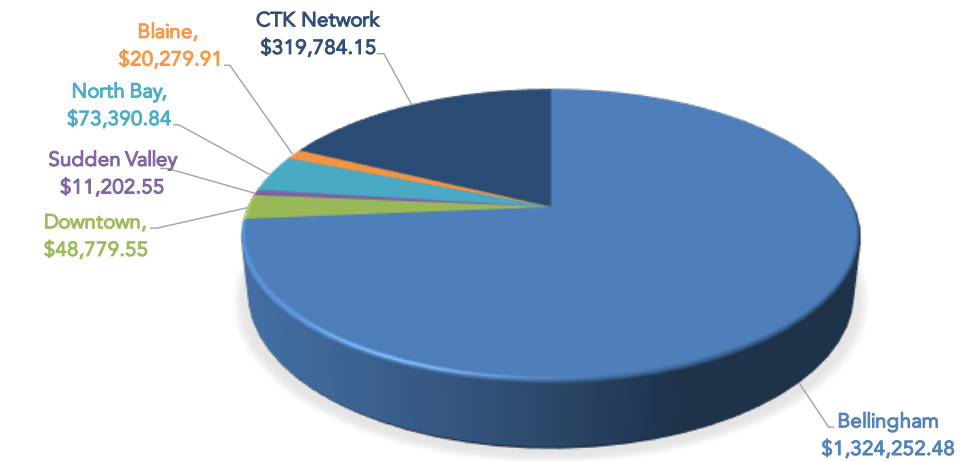
* Includes addition of Blaine campus. Restricted Expense now shows mission and blessing personnel that is paid out of Operations.

Annual Total Giving RESTRICTED & NON-RESTRICTED



The **Annual Total Giving** chart shows steady growth in giving over the past three years and little fluctuation over the past 10 years.

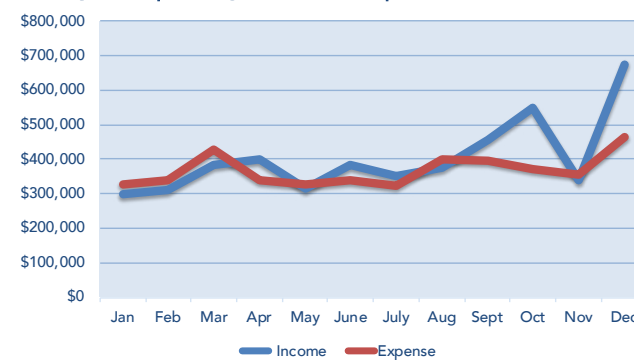
Year-End Cash Reserves NETWORK TOTAL: \$1,790,791.79



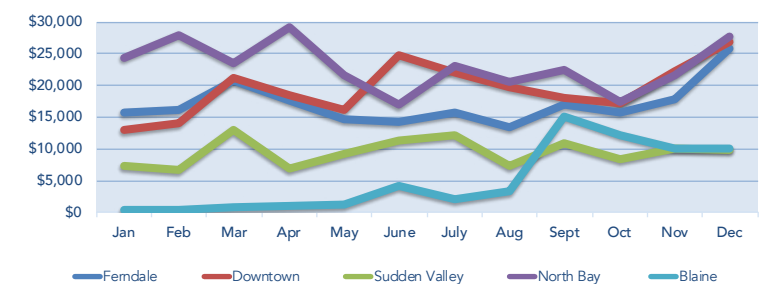
The **Year-End Cash Reserves** chart shows cash on hand for each campus at the end of 2018. The CTK Network keeps a separate account for network-wide income and expenses. CTK Ferndale ended the year with a negative cash balance (not shown on graph).

Income & Expense by Campus

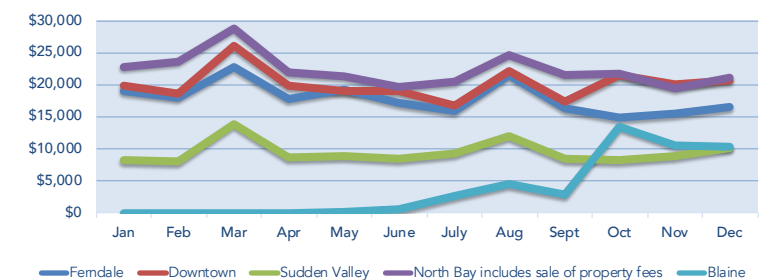
Bellingham Operating Income vs. Expense 2018



Campus Operating Income 2018



Campus Operating Expenses 2018



The **Income & Expense by Campus** charts show that, for the most part, each campus' income kept up with their expenses in 2018. Bellingham, Ferndale, Downtown, and North Bay received significant end-of-year giving.